

PRIME DAILY

July 9, 2025



Indo-US Trade deal – Waiting for Godot!

Investors awaiting an India-US trade agreement were again disappointed as no signs of a deal were forthcoming. There is some hope that the agreement may be signed soon, though the deadline has been pushed to July 31st.

U.S. Equities edge lower as investors look for tariff clarity.

Wall Street was in sideways mode, seemingly fatigued by tariff headlines, as the beaten-down dollar posted its second consecutive gain.

The S&P 500 closed nearly flat, and the Dow slipped as markets digested President Trump's extension of the tariff deadline to August 1. Mixed signals from the White House and sector-specific tariff threats, including a new 50% duty on copper, kept traders cautious.

The Nasdaq eked out a slight gain, outperforming other major indices. Mega-cap tech stocks stabilised after recent volatility, with Tesla rebounding and other giants, such as Nvidia and Microsoft, seeing modest moves.

The recent extension of the US tariff deadline has provided temporary relief to global markets, helping to ease investor anxiety and spark attempts at recovery across major indices. President Trump initially set a July 9 deadline for trading partners to finalise new agreements or face steep tariffs. An executive order pushed this back by three weeks to August 1, granting countries more time to negotiate and avoid immediate penalties.

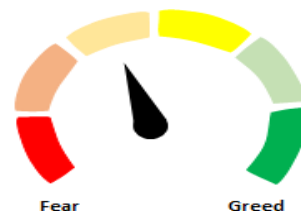
On the domestic front, India Inc.'s first-quarter earnings season for FY26 kicks off this week, with IT giants TCS and Tata Elxsi scheduled to announce results tomorrow, followed by retail major D-Mart on July 11th.

The Nifty displayed a late-session optimism, breaking out of a narrow range that had held it for most of the trading day.

The encouraging sign for the last two trading sessions is that the Nifty has been registering higher highs and higher lows, a bullish indicator. Immediate resistance for the Nifty is now seen at 25,669, a level above which the index could extend its gains confidently towards the 26,000 mark. On the downside, 25331 would continue to serve as crucial support.

Indian markets are likely to open subdued on the back of any immediate triggers.

("Waiting for Godot" by Samuel Beckett is a famous play about two characters, Vladimir and Estragon, who wait endlessly for someone named Godot, who never arrives.)



Global Equity Indices			
	Close	Abs. Change	% Change
Indian Indices			
Sensex	83,713	270.0 ▲	0.32%
Nifty	25,523	61.2 ▲	0.24%
Midcap	59,415	-100.3 ▼	-0.17%
Small cap	18,895	-55.0 ▼	-0.29%
US Indices			
Dow Jones	44,241	-165.6 ▼	-0.37%
S&P 500	6,226	-4.5 ▼	-0.07%
Nasdaq	20,418	5.9 ▲	0.03%
European Indices			
FTSE	8,854	47.6 ▲	0.54%
DAX	24,207	133.2 ▲	0.55%
CAC	7,767	43.2 ▲	0.56%
Asian Indices			
Shanghai	3,509	35.4 ▲	1.02%
Hang Seng	23,947	58.8 ▲	0.25%
Nikkei	39,677	89.7 ▲	0.23%

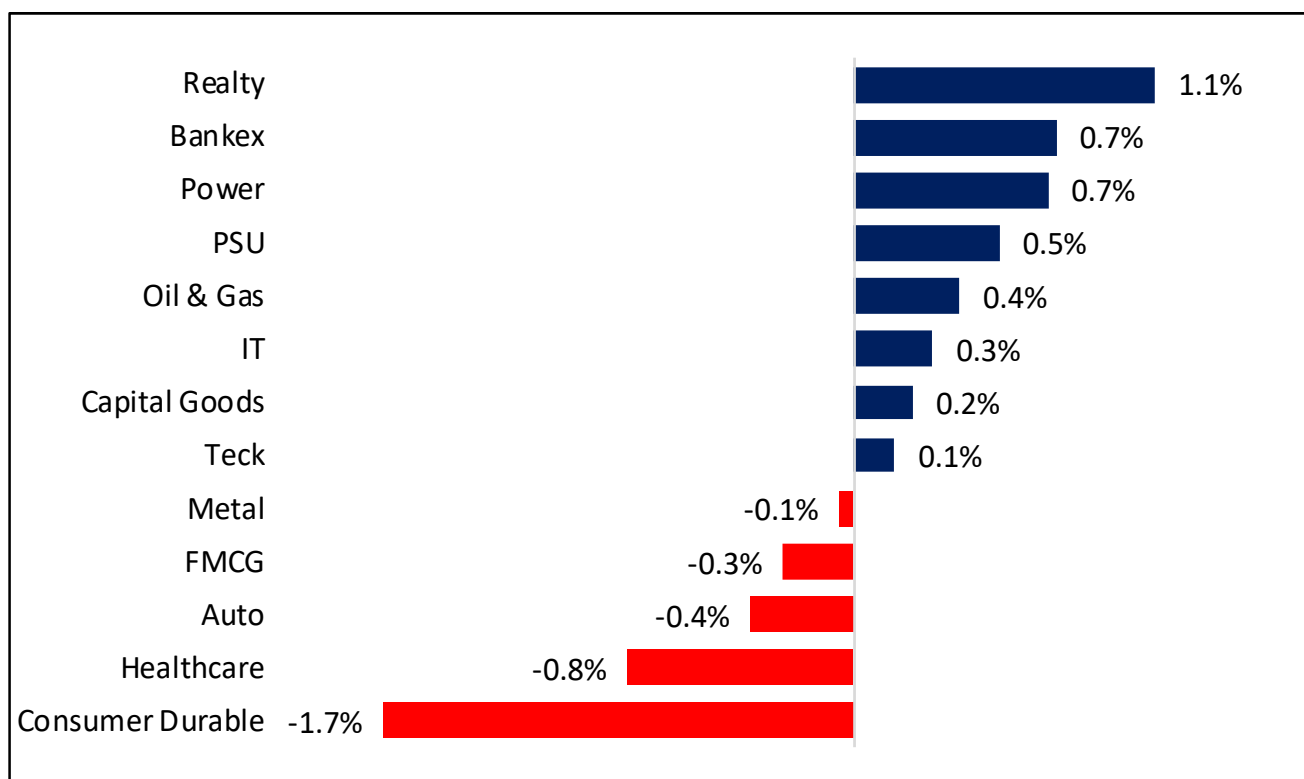
Indices Futures			
	Close	Abs. Change	% Change
IFSC Nifty			
IFSC Nifty	25,590	-0.5 ▼	0.00%
US Indices			
Dow Jones	44,476	-36.0 ▼	-0.08%
S&P 500	6,267	-5.0 ▼	-0.08%
Nasdaq	22,880	-16.5 ▼	-0.07%
European Indices			
FTSE	8,871	17.0 ▲	0.19%
DAX	24,331	30.0 ▲	0.12%
Asian Indices			
Shanghai	3,967	7.8 ▲	0.20%
Hang Seng	23,940	-167.0 ▼	-0.69%
Nikkei	39,670	-150.0 ▼	-0.38%

Nifty50 Index Contributors

Top Five (Positive Contributors)		
Stock	Points	% Change
KOTAKBANK	24.2	0.10
HDFCBANK	23.6	0.09
ICICIBANK	9.9	0.04
INFY	9.3	0.04
ETERNAL	7.6	0.03

Bottom Five (Negative Contributors)		
Stock	Points	% Change
TITAN	-20.5	-0.08
AXISBANK	-6.1	-0.02
RELIANCE	-5.8	-0.02
DRREDDY	-3.6	-0.01
HINDUNILVR	-3.5	-0.01

BSE Sectoral Leaders & Laggards

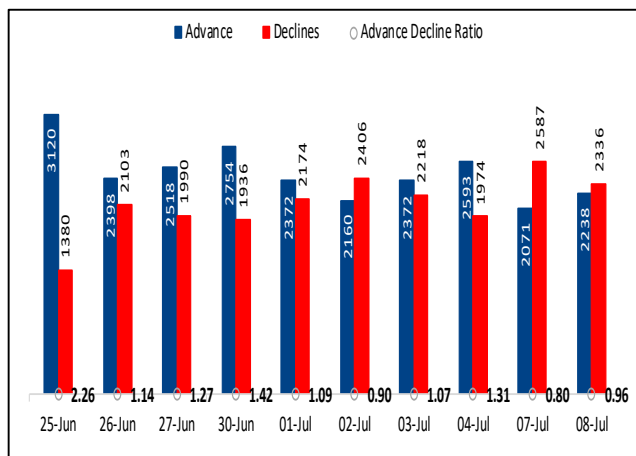


Nifty50 Index Top Pops & Drops

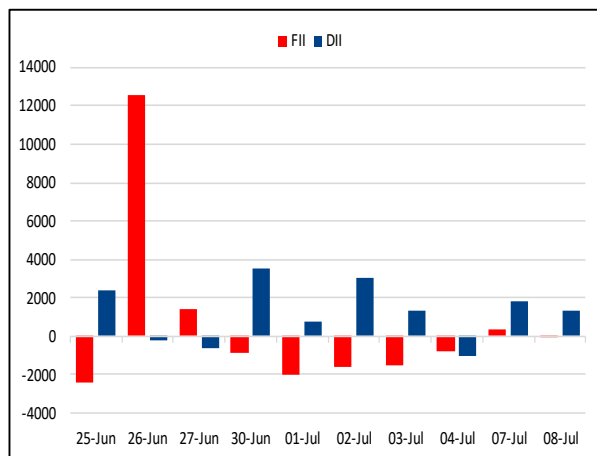
Nifty50 Top Five Gainers			
Symbol	LTP	% Change	Volume
KOTAKBANK	2,224.5	3.47	7,526,291
ETERNAL	263.5	1.91	18,312,891
ASIANPAINT	2,484.6	1.71	1,136,367
NTPC	343.2	1.70	12,092,302
GRASIM	2,820.8	1.50	846,061

Nifty50 Top Five Losers			
Symbol	LTP	% Change	Volume
TITAN	3,441.3	-6.13	3,952,270
DRREDDY	1,283.8	-2.04	1,602,620
CIPLA	1,488.3	-1.47	2,197,699
BAJAJ-AUTO	8,339.5	-1.47	253,579
TRENT	5,440.0	-1.07	1,699,343

BSE Advance & Declines



Institutional Activities



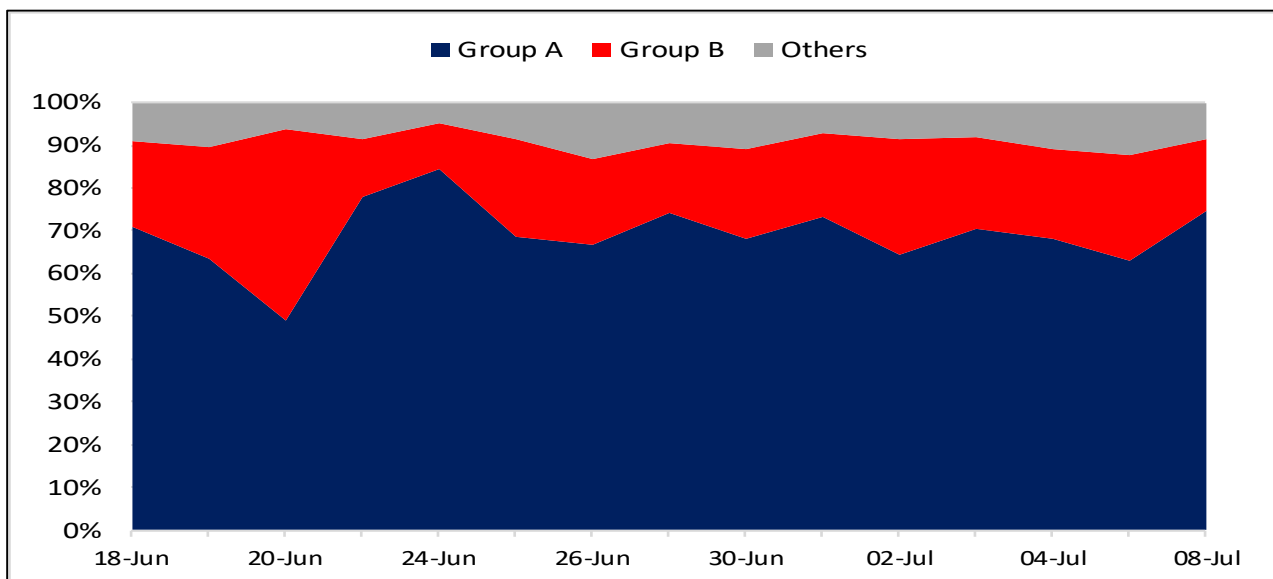
52 Week High Stocks

	8-Jul-25	7-Jul-25
BSE Universe	177	199
BSE Group A Stocks Hitting 52 Week High		
Stocks	Price	52 Week High
JPPOWER	22.4	23.9
DBREALTY	246.6	248.1
GABRIEL	991.4	1012.3
SRF	3286.9	3296.0
DIVISLAB	6931.8	7077.7

52 Week Low Stocks

	8-Jul-25	7-Jul-25
BSE Universe	66	72
BSE Group A Stocks Hitting 52 Week Low		
Stocks	Price	52 Week Low
SPICEJET	38.3	38.1
PROTEAN	823.5	820.5

BSE Cash Market Turnover Participant-wise



News Highly Sensitive to Stock Price

Impact	Stock	News
	Ashoka Buidcon	The company's arm has submitted Rs 1,391 crore financing documents to NHAI for the development of four lane corridor. It is excluding GST. Construction period of 910 days from Appointed Date and Operation Period: 15 years from COD.
	Seamec Ltd.	The company has secured a Rs 39.2 crore offshore repair contract from ONGC. The project involves repair and replacement of Spider Deck Members, with execution starting from Oct. 16, 2025, and completing within 90 days.
	Signature Global	Signature Global reported a 15 per cent decline in sales bookings to Rs 2,640 crore in the first quarter of this fiscal as it sold less homes. Its sales bookings or pre-sales stood at Rs 3,120 crore in the year-ago period. The company said it sold 778 homes in April-June 2025 compared to 968 units in the year-ago period. In terms of volumes, pre-sales dipped 20 per cent to 16 lakh sq ft.

Stock	News
Indian Oil Corporation	Indian Oil is not interested in acquiring Rosneft's stake in Nayara Energy. Its an open offer, it's in the market.
Oil and Gas	The Petroleum and Natural Gas Regulatory Board (PNGRB) is planning to establish an exchange for trading petroleum products like ATF and naphtha, aiming for transparent pricing and supply-demand balance. Initially, the Indian Gas Exchange may facilitate this. PNGRB also seeks to convert state oil companies' pipelines into common carriers and enable co-retailing of petrol/diesel at CNG stations.
Varroc Engineering	Varroc Engineering Limited, along with its Wholly Owned Subsidiary, VarrocCorp Holding B.V., Netherlands, has received an intimation from the ICC International Court of Arbitration regarding a Request for Arbitration. This request was initiated by OPmobility Lighting Holding, France, pertaining to alleged breaches of covenants under a Securities Purchase Agreement. The claims against Varroc Engineering amount to US\$ 66.4 million plus legal costs.
Tata Motors	The Tata Motors Group global wholesales in Q1 FY26, including Jaguar Land Rover were at 2,99,664 nos., lower by 9%, as compared to Q1 FY25.
RailTel	RailTel Corporation of India Ltd has secured a contract from Central Warehousing Corporation for Rs 96.99 crore for supply, installation, testing, commissioning and comprehensive operation and maintenance of Smart Warehousing Elements at 226 food grain warehouses.
IDFC First Bank	The Finance Ministry has granted an exception to the IDFC First Bank to raise its shareholding above 30 percent in Niraj Kakad Constructions.
Pharma Stocks	The companies like Gland Pharma, Aurobindo Pharma, Dr. Reddy's Laboratories, Zydus Lifesciences, Lupin Ltd., Glenmark Pharmaceuticals, Sun Pharmaceuticals Industries Ltd., Cipla Ltd., Ipca Laboratories Ltd. will be in focus after US President Donald Trump threatened to slap 200% tariffs on pharmaceutical products.
Bajel Projects	The company will expand its Ranjangaon plant's galvanisation capacity from 40,500 MT to 1,10,000 MT annually by FY27, investing Rs 170 crore through internal accruals and debt.

Stock	News
Tata Steel	The company reported a steady crude steel production of 5.26 million tonne in India for Q1 FY26, marginally lower than 5.27 million tonne in the same quarter last year. Deliveries in India stood at 4.75 million tonne, down 3.8% year-on-year, due to maintenance shutdowns at its Jamshedpur and Neelachal Ispat Nigam Limited (NINL) facilities.
JSW Steel	The company reported a 14% year-on-year increase in consolidated crude steel production, reaching 7.26 million tonnes in Q1 FY26. The company's Indian operations contributed 7.02 million tonne, marking a 15% increase from the same quarter last year.
Gujarat Pipavav Port	The company reported container throughput of 164,000 TEUs in Q1 FY26, slightly below last year's 165,000 TEUs. Dry bulk volumes held steady at 0.55 million MT, while liquid cargo rose to 0.41 million MT, up from 0.34 million MT a year ago.
Dixon Technologies	The company has formed a joint venture, Lightanium Technologies Pvt Ltd, with Signify Innovations India to expand its lighting business. Dixon has invested Rs 2.5 crore for a 50% stake in the new entity.
Zee Entertainment Enterprises Ltd	The company has appointed Saurav Adhikari and Divya Karani as non-executive, non-independent directors, with over 75% shareholder approval via e-voting concluded on Tuesday.
KDDL	KDDL Limited and its wholly owned subsidiary Mahen Distribution Limited (MDL) have acquired additional equity shares of Ethos Limited, a material subsidiary, by subscribing to its rights issue. KDDL Limited acquired 11,058 equity shares (0.04%) at Rs 1,800 per share. Mahen Distribution Limited acquired 11,30,199 equity shares (4.22%) at Rs 1,800 per share.
CAMS	CAMS has officially launched the new CAMSPay Payment Gateway, a next-generation platform to address the evolving demands of India's fast-changing digital payments landscape. The gateway is engineered to support over 5,000 transactions per second (TPS), making it ideal for high-volume enterprises.
ISGEC Heavy Engineering	Board approved proposal of investment of Rs 53.5 crore towards setting up a factory at Bhartoli, Dist. Kurukshetra, Haryana. It will manufacture mechanical presses. It would augment existing capacity of manufacturing at Yamunanagar.

Stock	News
Synergy Green Inds. (SGIL)	<p>Adani Wind, the wind energy division of Adani New Industries Ltd. has awarded Synergy Green Industries Ltd., a development order for 3.3 MW turbine parts. The development phase is expected to be completed in Q3 FY2026, with serial production scheduled in Q4 FY 2026.</p> <p>Synergy Green is already engaged in the serial supply of bearing housing castings for Adani's 5 MW turbine platform. With this new development order, the order book with Adani Wind is projected to double from Rs 20 crore in FY25 to Rs 40 crore in FY26, based on forecasted volumes.</p>
Oriental Rail Infra	<p>Company received an order worth Rs 2.45 crore from ICF, Chennai. It is to be executed in the next 18 months.</p> <p>Company received an order worth Rs 9.03 crore from Modern Coach Factory. The order is for seats and berths and to be executed in the next 12 months.</p>
Ola Electric	<p>Ola Electric announced the rollout of its in-house developed MoveOS 5 software across its S1 scooter lineup and the newly launched Roadster X motorcycles. According to the company, the latest software upgrade enhances vehicle performance, boosts reliability, and extends range—unlocking new capabilities and refining the overall riding experience.</p>

Key Events

US small business sentiment ticks down in June

U.S. small-business confidence slipped in June, as firms overall felt they had too much inventory on hand amid ongoing trade tensions and declining optimism over the outlook for sales. The National Federation of Independent Business said on Tuesday its Small Business Optimism Index fell two tenths of a point last month to 98.6. A substantial increase in respondents reporting excess inventories contributed the most to the decline, the NFIB said, with nearly one in eight businesses reporting inventories were "too high" in June, almost double that in May.

Japan Eco Watchers Index Rises In June

A measure of the public assessment of the current situation of the Japanese economy improved less-than-expected in June. The current conditions index of the Economy Watchers' Survey rose to a 3-month high of 45.0 in June from 44.4 in May. However, any score below 50 indicates pessimism. The outlook index that signals future activity also improved to 45.9 from 44.8 in May.

Nifty : Holds An Uptrend; Crucial Support Seen at 25331; Resistance Band 25600-25670

NIFTY [N59901] 25427.85, 25548.05, 25424.15, 25522.50, 4753933312, 0.24%
Price



Nifty Infra : Breakout From Consolidation; Expect Outperformance

Nifty Infra [N59912] 9443.80, 9494.55, 9434.00, 9481.30, 4753933312, 0.28%
Price

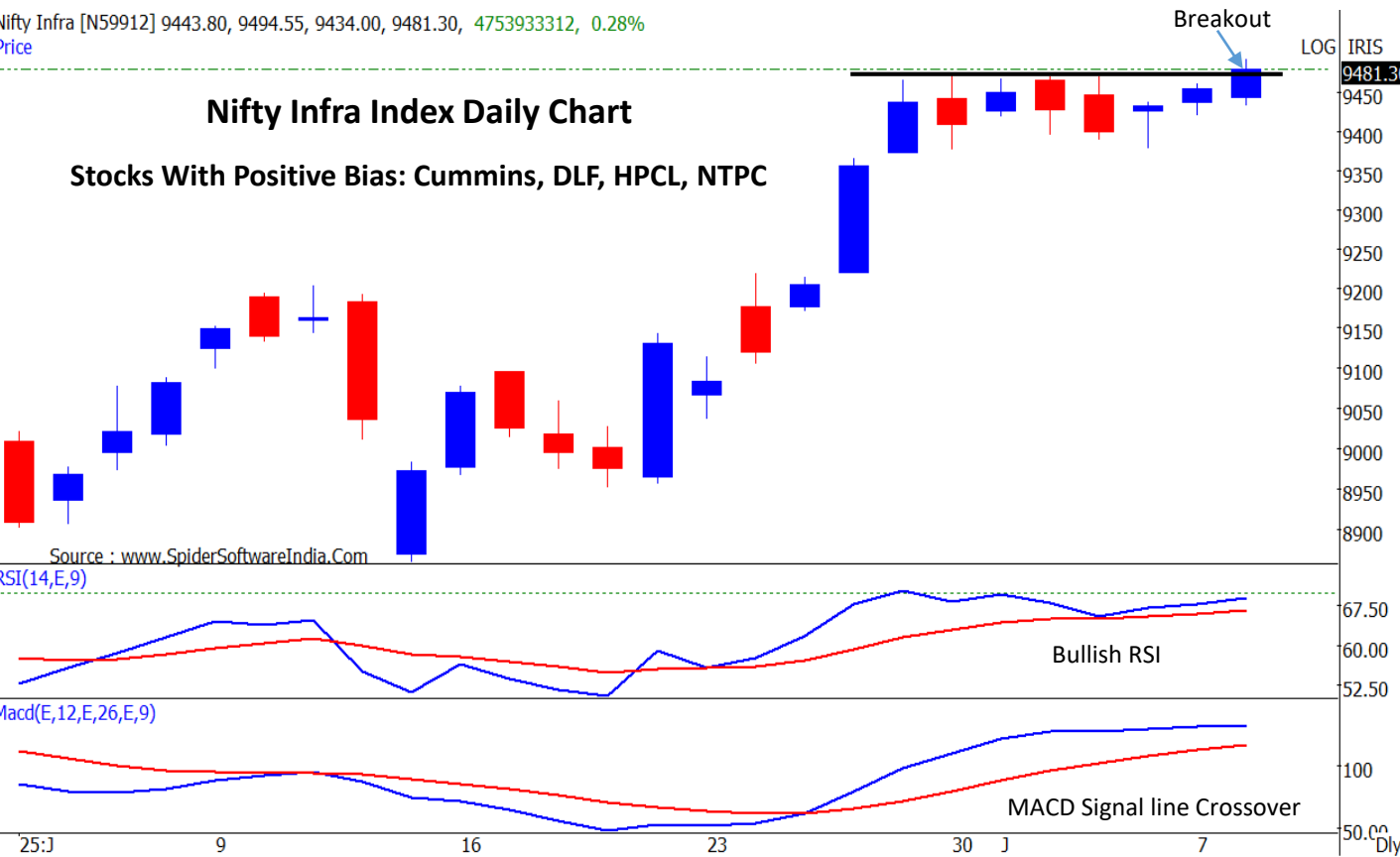
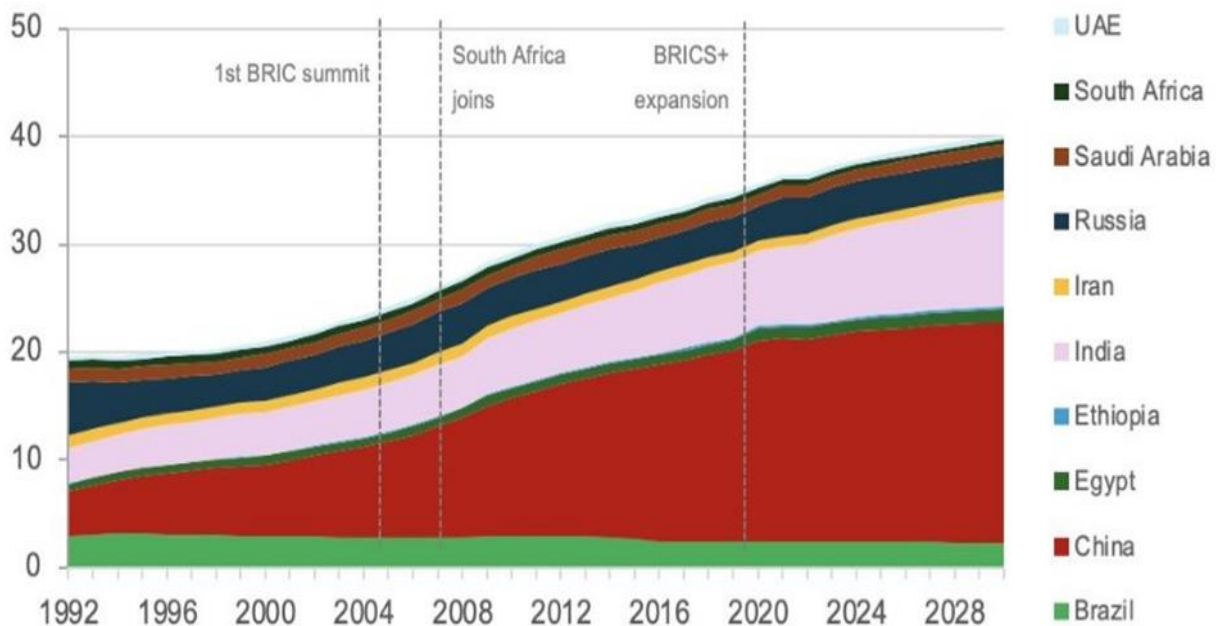


Chart With Interesting Observations

Growing Importance of BRICS+

- BRICS+ blocs position in the global economy is certainly impressive. The bloc have increased their share of world output from 23% to 34% since their first summit in 2009, or 38% including the new members (in PPP terms). IMF forecasts suggest this will surpass 40% by 2030.
- Their share of world trade is up from 13% to 22% since 2009. More importantly for this analysis, the group's intra-trade has increased significantly since its initial formation (in 2009, as BRIC). Approximately 28% of the bloc's trade is now conducted among its members, up from 15%. As a share of global exports, intra-BRIC trade has risen from 5% to 9%, or from 10% to 16% including the new members, according to WITS data.
- The bloc is strengthening the tie-up to fight with Western nations.

BRICS+ share of World GDP (PPP)



Source: IMF, World Bank, HSL Prime Research

F&O Highlights

LONG BUILD UP WAS SEEN IN THE NIFTY & BANK NIFTY FUTURES

Create Longs with the SL of 25400 Levels.

- The Nifty displayed a late-session optimism, breaking out of a narrow range that had held it for the most part of the trading day. While the index was largely range-bound until 2:45 P.M., the final 45 minutes saw a powerful surge of over 100 points, showcasing renewed buying conviction. The Nifty finally settled with a gain of 61 points (0.24%), to close at 25,522.
- Long Build-Up was seen in the Nifty Futures where Open Interest rose by 4.17% with Nifty rising by 0.24%.
- Long Build-Up was seen in the Bank Nifty Futures where Open Interest rose by 2.41% with Bank Nifty rising by 0.54%.
- Nifty Open Interest Put Call ratio rose to 1.04 levels from 0.95 levels.
- Amongst the Nifty options (10-Jul Expiry), Call writing is seen at 25700-25800 levels, indicating Nifty is likely to find strong resistance in the vicinity of 25700-25800 levels. On the lower side, an immediate support is placed in the vicinity of 25400-25500 levels where we have seen Put writing.
- Short build-up was seen by FII's in the Index Futures segment where they net sold worth 269 cr with their Open Interest going up by 6976 contracts.

Index	Expected Trend	Prev. Close	Buy/Sell	Stop Loss	Target
NIFTY FUT	UP	25611.90	BUY AROUND 25500	25400	25800
BANK NIFTY FUT	UP	57454.00	BUY AROUND 57300	57100	57600

Nifty50 Snapshot			
	08-Jul-25	07-Jul-25	% Chg.
Nifty Spot	25522.50	25461.30	0.24
Nifty Futures	25611.90	25538.90	0.29
Premium/ (Discount)	89.40	77.60	N.A.
Open Interest (OI)	1.68	1.61	4.17
Nifty PCR	1.04	0.95	9.11

Bank Nifty Snapshot			
	08-Jul-25	07-Jul-25	% Chg.
Bank Nifty Spot	57256.30	56949.20	0.54
Bank Nifty Futures	57454.00	57187.80	0.47
Premium/ (Discount)	197.70	238.60	N.A.
Open Interest (OI)	0.24	0.23	2.41
Bank Nifty PCR	1.02	1.00	2.43

Nifty Options Highest OI (Weekly)			
CALL		PUT	
Strike Price	Open Interest (Contracts)	Strike Price	Open Interest (Contracts)
26000	168580	25400	139952

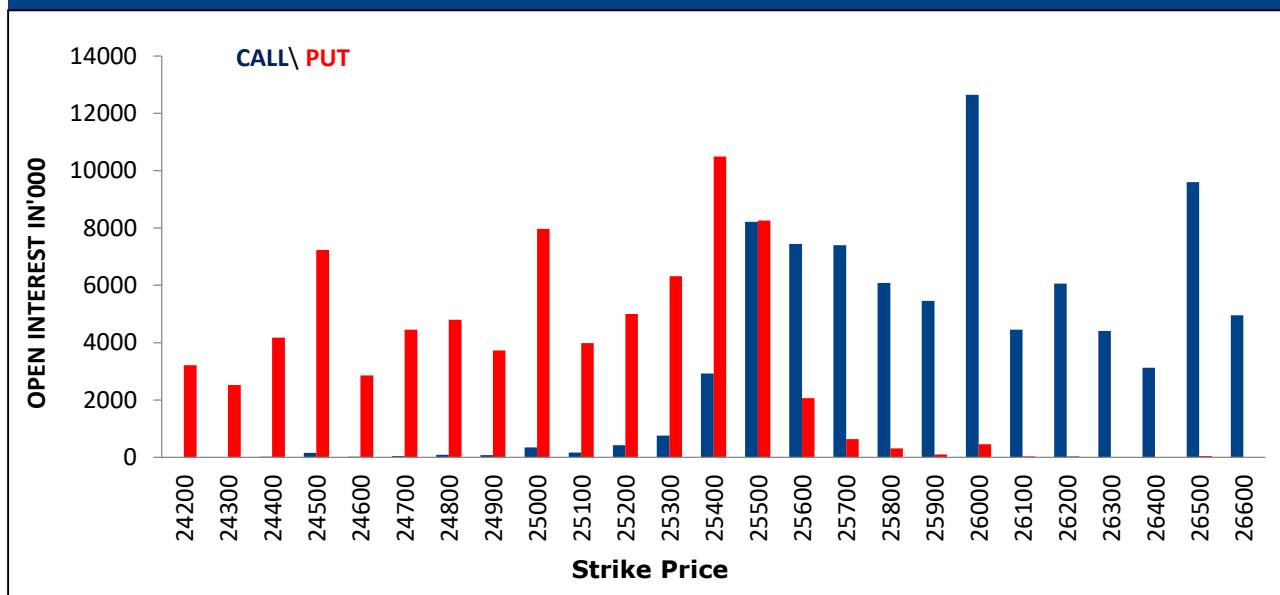
FII Activity On 08 July 2025

	BUY		SELL		NET	OPEN INTEREST	
	Contracts	Value (Rs Cr)	Contracts	Value (Rs Cr)	(Rs Cr)	Contracts	Value (Rs Cr)
Index Futures	10264	1982	11674	2251	-269	165855	32008
Nifty Futures	6327	1213	7984	1535	-321	119558	22989
Bank Nifty Fut.	2492	501	2190	440	61	25852	5201
Index Options	3740816	715601	3755262	718308	-2708	1372520	264226
Nifty Options	3628013	693633	3639345	695775	-2142	1139223	218069
Bank Nifty Opt.	69615	13988	72089	14444	-455	197576	39594
Stock Futures	224565	15914	251112	17570	-1656	5515683	390580
Stock Options	223294	16789	229230	17330	-540	854162	60617

FII's Open Interest (Contracts)

Date	Index Futures	Nifty Futures	Bank nifty Futures	Index Options	Nifty Options	Bank Nifty Options	Stock Futures	Stock Options
08-Jul-25	165855	119558	25852	1372520	1139223	197576	5515683	854162
07-Jul-25	158879	112897	25396	1328180	1095419	200562	5498628	854568
Net Contracts	6976	6661	456	44340	43804	-2986	17055	-406

Nifty Weekly (10 - July) Option Open Interest Distribution



Top Gainers OI Wise		
Company	Future OI (%)	Price (%)
BSOFT	13	0
ABB	12	0
APOLLOHOSP	10	-1
PIDILITIND	9	0
CGPOWER	8	-1

Top Losers OI Wise		
Company	Future OI (%)	Price (%)
BPCL	-11	1
OBEROIRLTY	-5	1
IIFL	-4	3
CYIENT	-4	-1
GLENMARK	-3	-2

Top Gainers Price Wise		
Company	Future OI (%)	Price (%)
NMDC	1	4
KPITTECH	-1	3
DIVISLAB	3	3
INDHOTEL	0	3
HDFCBANK	1	2

Top Losers Price Wise		
Company	Future OI (%)	Price (%)
TORNTPHARM	1	-6
CAMS	4	-6
APOLLOHOSP	1	-4
BAJAJ-AUTO	5	-3
MGL	-2	-3

Long Buildup		
Company	Future OI (%)	Price (%)
ABFRL	7	2
HDFCAMC	6	2
DELHIVERY	6	3
IIFL	5	3
KOTAKBANK	5	3

Short Buildup		
Company	Future OI (%)	Price (%)
BSE	13	-6
360ONE	12	-3
ANGELONE	10	-4
PGEL	9	-2
CDSL	8	-1

Long Unwinding		
Company	Future OI (%)	Price (%)
BOSCHLTD	-11	-2
GAIL	-3	0
FORTIS	-3	-2
MGL	-2	-2
KAYNES	-2	-3

Short Covering		
Company	Future OI (%)	Price (%)
NYKAA	-5	1
IGL	-4	1
CUMMINSIND	-4	1
GODREJCP	-3	1
SBICARD	-3	1

Securities In Ban For Trade – 09.07.2025	
No.	Company Name
1.	RBLBANK

Economic Calendar

Wednesday	Thursday	Friday	Monday	Tuesday
9 July	10 July	11 July	14 July	15 July
China: CPI, PPI US: MBA Mortgage FOMC Minutes	Japan: PPI US: Initial & Conti. Claims	UK: GDP, IIP, Trade Balance	Japan: IIP India: Wholesale Price, CPI China: Trade Balance	China: New Home Price, GDP, Retail sales, IIP EU: IIP US: Empire Mfg., CPI India: Trade Balance

Open Derivatives Trading Calls

NO	RECO DT	RECO	COMPANY NAME	BUY RANGE	CMP	SL	TARGET	UPSIDE %	VALID TILL
1	8-JUL-25	BUY	BANK NIFTY JULY FUT	57380-57150	57,459.8	57,020.0	57800	0.6	11-JUL-25
2	8-JUL-25	BUY	NIFTY JULY FUT	25615-25540	25,625.0	25,515.0	25815	0.7	11-JUL-25
3	8-JUL-25	BUY	NIFTY 10TH JULY 25500 CALL OPTION	111	114.2	75.0	167	46.2	11-JUL-25
4	8-JUL-25	BUY	MIDCAP NIFTY 31ST JULY 13500 CALL OPTION	176.7	188.0	125.0	250	33.0	11-JUL-25
5	24-JUN-25	BUY	SBI AUG FUT	803-816	819.9	795.0	900	9.8	28-AUG-25
6	27-JUN-25	BUY	ICICI BANK JULY FUT	1459.60-1430	1,447.9	1,402.0	1520	5.0	11-JUL-25
7	2-JUL-25	BUY	JSW STEEL JULY FUT	1061-1034	1,046.6	1,023.0	1115	6.5	16-JUL-25
8	3-JUL-25	BUY	ULTRATECH CEMENT JULY FUT	12510-12203	12,468.0	12,072.0	13160	5.6	17-JUL-25

Open Short-Term MTF Calls

NO.	RECO DT.	RECO	COMPANY NAME	BUY RANGE	CMP	Lower Band	SL	TARGET	UPSIDE %	VALID TILL
1	20-JUN-25	BUY	M&M	3144.70-3174.70	3,157.9	3,084.7	3,033.7	3,309.7	4.8	11-JUL-25
2	26-JUN-25	BUY	MAHARASHTRA SEAMLESS	742-752	718.3	718.0	706.0	796.0	10.8	10-JUL-25
3	1-JUL-25	BUY	CARBORUNDUM UNIVERSAL	992-978.45	989.2	949.0	931.0	1,048.0	5.9	15-JUL-25
4	1-JUL-25	BUY	MAHARASHTRA BANK	57.5-58.10	56.8	55.6	54.7	61.7	8.6	15-JUL-25
5	4-JUL-25	BUY	DEVYANI INTERNATIONAL	174-172	171.3	167.0	163.5	184.0	7.4	18-JUL-25
6	4-JUL-25	BUY	HONEYWELL AUTOMATION	40760-41200	40,870.0	39,860.0	39,100.0	42,900.0	5.0	18-JUL-25

Open Positional MTF Calls

NO.	RECO DT.	RECO	COMPANY NAME	BUY RANGE	CMP	SL	TARGET 1	TARGET 2	UPSIDE %	VALID TILL
1	26-MAY-25	BUY	CROMPTON GREAVES	355.35-339	343.5	333.0	380.0	391.0	14	10-JUL-25
2	26-MAY-25	BUY	CONSUMEETF	118.81-115.80	121.3	114.0	124.5	127.0	5	24-AUG-25
3	2-JUN-25	BUY	INDIAN BANK	633.30-612	638.6	594.0	680.0	705.0	10	17-JUL-25
4	4-JUN-25	BUY	MACROTECH DEVELOPERS	1446.50-1340	1,374.9	1300.0	1621.0	1680.0	22	3-AUG-25
5	9-JUN-25	BUY	JSW INFRA	310-287	311.7	279.0	335.0	350.0	12	24-JUL-25
6	9-JUN-25	BUY	AUTOIETF	24.45-23.79	24.5	23.5	25.1	25.7	5	7-SEP-25
7	10-JUN-25	BUY	ITBEES	41.90-42.10	42.4	40.2	44.0	46.0	9	8-SEP-25
8	11-JUN-25	BUY	VRL LOGISTICS	572-584	604.9	529.0	620.0	650.0	7	26-JUL-25
9	25-JUN-25	BUY	JUBILANT FOOD	716-708.50	688.2	665.0	765.0	815.0	18	9-AUG-25
10	26-JUN-25	BUY	PCBL	423-415.05	404.4	383.0	457.0	485.0	20	25-AUG-25

*= 1st Target Achieved

NSE 200 SUPPORT & RESISTANCE

SYMBOL	CLOSE	R2	R1	PIVOT	S1	S2	5 DMA	20 DMA	% Delivery	Trend
ABB	5840.0	5912.0	5876.0	5849.0	5813.0	5786.0	5864.7	5967.8	71.6	Bearish
ABCAPITAL	277.4	280.8	279.1	276.8	275.1	272.7	275.0	264.6	40.5	Bullish
ABFRL	79.5	81.1	80.3	78.9	78.1	76.7	78.1	75.5	40.4	Bullish
ACC	1980.0	2003.5	1991.7	1970.3	1958.5	1937.1	1961.1	1890.3	60.9	Bullish
AMBUJACEM	591.6	601.1	596.3	588.2	583.4	575.2	592.5	563.8	64.5	Bullish
ADANIPOWER	600.0	625.3	612.7	602.3	589.7	579.3	592.3	570.3	23.5	Bullish
ADANIENSOL	881.3	899.8	890.5	883.3	874.0	866.8	879.2	864.6	57.0	Bullish
ADANIGREEN	992.0	1016.5	1004.2	992.8	980.5	969.1	1001.5	992.9	33.4	Bearish
ADANIENT	2591.3	2615.1	2603.2	2588.1	2576.2	2561.1	2601.6	2549.0	27.8	Bullish
ADANIPORTS	1448.5	1462.7	1455.6	1442.8	1435.7	1422.9	1436.7	1412.4	41.8	Bullish
ASHOKLEY	249.9	253.7	251.8	249.5	247.5	245.2	250.3	242.9	54.1	Bullish
ALKEM	4800.9	4934.2	4867.5	4818.9	4752.2	4703.6	4852.3	4842.1	55.2	Bearish
APLAPOLLO	1741.4	1760.0	1750.7	1736.6	1727.3	1713.2	1733.1	1784.7	62.0	Bearish
APOLLOHOSP	7565.0	7665.7	7615.3	7584.7	7534.3	7503.7	7548.1	7199.5	72.1	Bullish
ASIANPAINT	2484.6	2520.7	2502.6	2470.0	2451.9	2419.3	2440.4	2318.4	59.0	Bullish
APOLLTYRE	471.8	485.6	478.7	468.1	461.2	450.6	464.1	452.4	42.1	Bullish
AUROPHARMA	1147.7	1191.3	1169.5	1150.1	1128.3	1108.9	1167.6	1134.0	34.0	Bullish
ASTRAL	1486.0	1514.5	1500.2	1482.7	1468.4	1450.9	1488.8	1514.6	61.4	Bearish
ATGL	653.5	670.4	661.9	656.0	647.5	641.6	659.4	654.4	35.7	Bearish
AUBANK	819.9	833.6	826.7	814.4	807.5	795.2	816.7	801.4	62.6	Bullish
AXISBANK	1165.4	1187.2	1176.3	1169.1	1158.2	1151.0	1172.9	1204.2	76.0	Bearish
BAJFINANCE	927.7	936.0	931.8	925.3	921.1	914.6	922.2	927.0	60.8	Bearish
BAJAJHFL	120.8	121.8	121.3	120.8	120.2	119.7	121.3	121.3	57.2	Bearish
BANDHANBNK	174.7	180.0	177.4	175.6	172.9	171.1	180.8	181.1	43.0	Bearish
BDL	1969.6	1999.6	1984.6	1960.0	1945.0	1920.4	1966.2	1910.9	26.5	Bullish
BHARTIARTL	2030.0	2046.8	2038.4	2026.6	2018.2	2006.4	2026.7	1949.0	65.5	Bullish
BHARTIHEXA	1789.6	1871.7	1830.7	1804.6	1763.6	1737.5	1885.9	1842.7	77.2	Bearish
BEL	422.0	427.6	424.8	420.5	417.7	413.4	424.0	411.6	48.0	Bullish
BHEL	258.1	260.7	259.4	257.8	256.5	254.9	258.6	257.4	38.9	Bullish
BHARATFORG	1281.1	1319.1	1300.1	1288.7	1269.7	1258.3	1302.4	1299.5	43.2	Bearish
BIOCON	369.4	377.4	373.4	370.0	366.0	362.6	372.9	357.7	52.0	Bullish
BAJAJ-AUTO	8339.5	8551.2	8445.3	8368.2	8262.3	8185.2	8395.0	8439.0	53.8	Bearish
BAJAJFINSV	2018.3	2034.4	2026.4	2012.5	2004.5	1990.6	2001.5	2012.7	69.2	Bearish
BAJAJHLDNG	13882.0	14522.0	14202.0	14026.0	13706.0	13530.0	14199.6	13987.1	46.4	Bearish
BANKBARODA	239.8	244.0	241.9	240.1	238.0	236.3	241.4	239.9	47.9	Bearish
BANKINDIA	117.0	119.7	118.3	117.2	115.8	114.7	118.0	118.4	50.5	Bearish
MAHABANK	56.8	58.1	57.5	56.9	56.3	55.8	57.2	55.4	40.2	Bullish
BOSCHLTD	35490.0	36690.0	36090.0	35735.0	35135.0	34780.0	34863.0	32758.3	36.5	Bullish
BPCL	355.6	364.3	359.9	354.3	350.0	344.4	343.1	326.6	53.9	Bullish
BRITANNIA	5839.0	5968.0	5903.5	5857.5	5793.0	5747.0	5815.8	5691.3	69.7	Bullish
BSE	2477.0	2754.3	2615.7	2505.3	2366.7	2256.3	2664.2	2721.0	31.0	Bearish
CANBK	113.7	115.3	114.5	113.7	112.9	112.1	114.2	111.8	52.4	Bullish
CONCOR	598.4	609.4	603.9	596.0	590.5	582.6	597.4	601.5	40.4	Bearish
CGPOWER	675.8	687.7	681.8	673.4	667.5	659.1	673.3	679.0	51.3	Bearish
CHOLAFIN	1521.7	1537.6	1529.6	1518.1	1510.1	1498.6	1528.9	1574.9	79.6	Bearish
CIPLA	1488.3	1525.4	1506.8	1492.0	1473.4	1458.6	1503.7	1503.7	66.3	Bearish
COLPAL	2451.0	2491.0	2471.0	2448.0	2428.0	2405.0	2448.6	2412.3	64.0	Bullish
COALINDIA	382.9	386.8	384.8	383.6	381.6	380.4	385.3	390.4	71.8	Bearish
COCHINSHIP	2021.5	2088.0	2054.7	2032.4	1999.1	1976.8	2034.2	2111.1	28.4	Bearish
COFORGE	1949.6	2014.3	1982.0	1961.6	1929.3	1908.9	1941.3	1871.8	49.2	Bullish

NSE 200 SUPPORT & RESISTANCE

SYMBOL	CLOSE	R2	R1	PIVOT	S1	S2	5 DMA	20 DMA	% Delivery	Trend
DABUR	513.1	516.6	514.8	512.7	510.9	508.8	500.0	481.5	55.3	Bullish
DIVISLAB	6938.0	7134.0	7036.0	6973.5	6875.5	6813.0	6893.7	6708.4	38.7	Bullish
DIXON	15473.0	15703.7	15588.3	15409.7	15294.3	15115.7	15269.0	14633.4	23.4	Bullish
DLF	842.9	858.3	850.6	836.7	829.0	815.1	834.6	846.0	46.9	Bearish
DMART	4213.0	4299.3	4256.1	4224.6	4181.4	4149.9	4290.2	4242.5	48.0	Bearish
DRREDDY	1283.8	1325.9	1304.9	1289.2	1268.2	1252.5	1292.8	1317.5	48.0	Bearish
EICHERMOT	5679.5	5734.2	5706.8	5677.7	5650.3	5621.2	5685.9	5546.7	64.8	Bullish
ESCORTS	3387.9	3446.5	3417.2	3369.2	3339.9	3291.9	3355.2	3281.1	42.0	Bullish
ETERNAL	263.5	267.1	265.3	262.4	260.6	257.7	260.8	256.7	48.7	Bullish
EXIDEIND	388.7	393.7	391.2	387.1	384.6	380.5	384.8	385.4	52.0	Bearish
FEDERALBNK	213.5	216.6	215.1	214.0	212.5	211.5	215.7	210.2	48.5	Bullish
GAIL	192.6	196.7	194.7	193.4	191.4	190.2	192.5	189.4	57.5	Bullish
GODREJCP	1277.4	1300.3	1288.9	1270.5	1259.1	1240.7	1216.9	1195.1	62.2	Bullish
GMRAIRPORT	91.2	92.5	91.9	90.9	90.3	89.3	89.6	84.7	54.0	Bullish
GLENMARK	1830.5	1878.1	1854.3	1838.2	1814.4	1798.3	1814.9	1716.4	69.2	Bullish
GODREJPROP	2310.4	2349.8	2330.1	2294.8	2275.1	2239.8	2293.9	2374.3	43.4	Bearish
GRASIM	2820.8	2876.5	2848.7	2813.4	2785.6	2750.3	2814.6	2769.0	46.3	Bullish
HAVELLS	1532.1	1556.8	1544.5	1529.2	1516.9	1501.6	1554.1	1553.1	50.1	Bearish
HCLTECH	1708.1	1736.2	1722.2	1704.8	1690.8	1673.4	1715.0	1716.1	60.7	Bearish
HDFCAMC	5109.0	5248.3	5178.7	5099.8	5030.2	4951.3	5052.5	5038.6	51.7	Bullish
HDFCBANK	2001.4	2022.5	2011.9	1994.5	1983.9	1966.5	1990.2	1970.1	61.3	Bullish
HDFCLIFE	794.2	804.7	799.4	791.3	786.0	777.9	788.9	781.8	79.0	Bullish
HEROMOTOCO	4300.4	4378.8	4339.6	4289.8	4250.6	4200.8	4301.3	4316.9	51.8	Bearish
HAL	5002.5	5089.6	5046.0	5006.3	4962.7	4923.0	4967.6	4952.2	46.0	Bullish
HINDALCO	685.6	701.5	693.6	688.3	680.4	675.1	693.7	671.1	62.6	Bullish
HINDPETRO	452.7	461.1	456.9	450.8	446.6	440.5	443.7	416.1	47.3	Bullish
HUDCO	229.2	233.1	231.1	227.6	225.6	222.1	230.6	231.6	26.5	Bearish
HINDUNILVR	2392.7	2431.6	2412.1	2399.1	2379.6	2366.6	2352.6	2317.0	67.3	Bullish
HYUNDAI	2055.1	2127.7	2091.4	2068.7	2032.4	2009.7	2087.2	2048.8	48.1	Bullish
HINDZINC	436.2	441.5	438.9	436.8	434.1	432.0	442.3	460.9	49.0	Bearish
ICICIBANK	1442.0	1454.0	1448.0	1439.0	1433.0	1424.0	1434.8	1429.8	59.8	Bullish
ICICIGI	2036.9	2060.4	2048.6	2033.4	2021.6	2006.4	2035.3	1988.1	80.7	Bullish
IDEA	7.3	7.4	7.4	7.3	7.2	7.1	7.4	7.0	19.8	Bullish
IDFCFIRSTB	77.9	78.5	78.2	77.7	77.4	76.9	77.7	73.1	62.1	Bullish
IGL	228.0	231.6	229.8	227.2	225.4	222.9	224.2	212.3	48.0	Bullish
INDHOTEL	739.3	746.8	743.0	740.1	736.4	733.5	745.7	757.0	73.7	Bearish
INDUSINDBK	850.3	868.3	859.3	853.9	844.9	839.4	856.2	843.5	38.1	Bullish
INDIANB	638.6	653.8	646.2	639.3	631.7	624.9	646.0	632.4	61.2	Bullish
INDIGO	5802.0	5851.7	5826.8	5783.2	5758.3	5714.7	5805.0	5609.2	72.1	Bullish
INDUSTOWER	406.3	413.2	409.7	406.5	403.1	399.9	417.7	405.5	66.7	Bullish
INFY	1638.7	1660.2	1649.4	1635.5	1624.7	1610.8	1627.1	1616.4	65.0	Bullish
NAUKRI	1458.9	1493.6	1476.3	1453.6	1436.3	1413.6	1454.7	1478.7	56.1	Bearish
IOC	153.8	156.0	154.9	153.9	152.8	151.7	151.0	144.9	51.4	Bullish
ICICIPRULI	664.6	674.2	669.4	664.2	659.4	654.2	656.1	643.1	51.5	Bullish
IRB	49.5	50.1	49.8	49.3	49.0	48.6	49.4	49.6	44.7	Bearish
IRCTC	785.2	789.5	787.4	783.8	781.6	778.0	780.9	771.7	57.1	Bullish
IREDA	166.5	169.3	167.9	166.6	165.1	163.8	167.2	168.4	37.1	Bearish
IRFC	138.2	140.7	139.5	138.1	136.9	135.5	139.2	138.9	35.6	Bearish
ITC	417.2	420.1	418.7	416.7	415.2	413.2	414.4	416.7	62.0	Bearish
JIOFIN	328.9	334.1	331.5	328.1	325.5	322.2	326.7	308.3	33.0	Bullish

NSE 200 SUPPORT & RESISTANCE

SYMBOL	CLOSE	R2	R1	PIVOT	S1	S2	5 DMA	20 DMA	% Delivery	Trend
JINDALSTEL	951.1	963.5	957.3	951.2	945.0	938.8	956.6	931.7	26.7	Bullish
JSWSTEEL	1045.0	1054.9	1050.0	1044.6	1039.7	1034.3	1047.0	1017.8	52.6	Bullish
JSWENERGY	513.6	524.1	518.8	511.6	506.3	499.1	512.7	511.2	44.6	Bullish
JUBLFOOD	688.2	697.3	692.8	686.1	681.5	674.8	699.6	694.9	45.5	Bearish
KALYANKJIL	573.8	597.4	585.6	574.3	562.4	551.1	582.4	543.5	22.7	Bullish
CUMMINSIND	3478.0	3527.3	3502.7	3458.3	3433.7	3389.3	3385.4	3334.2	57.5	Bullish
KOTAKBANK	2224.5	2279.4	2251.9	2214.1	2186.6	2148.8	2160.0	2163.4	47.0	Bearish
KPITTECH	1271.3	1282.8	1277.0	1268.8	1263.0	1254.8	1261.4	1323.0	50.0	Bearish
LICHSGFIN	605.2	616.9	611.0	605.3	599.4	593.7	608.5	606.1	49.2	Bearish
LICI	946.9	953.8	950.3	945.6	942.2	937.5	947.1	948.7	46.5	Bearish
LODHA	1374.9	1409.4	1392.1	1372.1	1354.8	1334.8	1377.6	1428.7	39.1	Bearish
LUPIN	1922.1	2000.7	1961.4	1938.2	1898.9	1875.7	1961.0	1960.0	69.6	Bearish
LT	3606.4	3647.5	3626.9	3593.5	3572.9	3539.5	3592.4	3622.9	59.2	Bearish
LTF	208.3	211.5	209.9	207.6	206.0	203.7	206.2	198.1	30.7	Bullish
LTIM	5369.0	5452.0	5410.5	5373.0	5331.5	5294.0	5332.8	5372.4	52.9	Bearish
MANKIND	2431.7	2462.6	2447.2	2427.6	2412.2	2392.6	2405.6	2351.7	58.5	Bullish
MFSL	1572.0	1593.7	1582.9	1572.4	1561.6	1551.1	1598.7	1595.7	61.9	Bearish
MAXHEALTH	1295.7	1321.6	1308.6	1297.9	1284.9	1274.2	1295.9	1243.1	67.8	Bullish
MAZADOCK	3291.4	3345.9	3318.7	3280.7	3253.5	3215.5	3292.6	3251.5	19.7	Bullish
M&M	3157.9	3194.6	3176.3	3149.6	3131.3	3104.6	3164.0	3127.8	47.8	Bullish
M&MFIN	269.9	272.9	271.4	268.7	267.2	264.5	266.5	268.3	53.3	Bearish
MOTILALOFS	919.6	969.4	944.5	928.1	903.2	886.8	910.5	858.4	29.1	Bullish
MOTHERSON	154.0	157.6	155.8	153.9	152.1	150.2	154.1	153.0	54.0	Bullish
MPHASIS	2909.6	2977.1	2943.3	2903.3	2869.5	2829.5	2895.9	2766.9	48.1	Bullish
MARICO	728.0	738.0	733.0	729.4	724.4	720.9	722.3	707.3	71.6	Bullish
MRF	144945.0	147581.7	146263.3	144236.7	142918.3	140891.7	144435.0	139906.3	40.8	Bullish
MARUTI	12414.0	12638.7	12526.3	12442.7	12330.3	12246.7	12590.8	12597.5	65.3	Bearish
MUTHOOTFIN	2649.8	2693.5	2671.7	2650.0	2628.2	2606.5	2646.7	2612.2	63.5	Bullish
NATIONALUM	189.9	192.5	191.2	189.6	188.3	186.7	191.0	188.8	47.2	Bullish
NESTLEIND	2417.9	2448.9	2433.4	2420.2	2404.7	2391.5	2401.8	2392.9	52.2	Bullish
NHPC	88.0	90.4	89.2	87.0	85.7	83.5	85.4	85.3	38.0	Bullish
NMDC	68.3	69.4	68.8	68.3	67.8	67.2	68.5	69.3	52.0	Bearish
NTPC	343.2	348.3	345.7	341.4	338.8	334.5	336.9	334.6	55.1	Bullish
NTPCGREEN	107.0	108.1	107.6	106.9	106.3	105.6	106.5	107.2	61.4	Bearish
NYKAA	202.6	204.4	203.5	202.0	201.1	199.6	203.2	201.0	64.3	Bullish
OBEROIRLTY	1857.5	1895.7	1876.6	1843.3	1824.2	1790.9	1868.0	1909.8	49.6	Bearish
OFSS	9006.5	9157.2	9081.8	8997.2	8921.8	8837.2	9018.6	9235.3	30.3	Bearish
OIL	443.1	449.1	446.1	443.6	440.6	438.0	443.7	454.8	53.6	Bearish
OLAELEC	40.8	41.9	41.3	41.0	40.4	40.1	41.1	44.0	41.9	Bearish
ONGC	243.2	245.6	244.4	242.5	241.4	239.5	243.0	246.9	56.5	Bearish
PAGEIND	48965.0	49695.0	49330.0	48830.0	48465.0	47965.0	48446.0	47175.8	56.8	Bullish
PATANJALI	1638.2	1688.9	1663.6	1646.3	1621.0	1603.7	1651.9	1650.6	36.7	Bearish
PAYTM	911.1	941.2	926.1	911.1	896.0	881.0	922.9	904.6	37.5	Bullish
PRESTIGE	1659.1	1695.5	1677.3	1646.8	1628.6	1598.1	1621.0	1670.2	37.2	Bearish
PHOENIXLTD	1574.7	1595.4	1585.0	1569.6	1559.2	1543.8	1534.8	1584.6	62.7	Bearish
PIIND	4148.5	4206.0	4177.3	4151.1	4122.4	4096.2	4187.4	4128.5	83.3	Bullish
PIDILITIND	3067.6	3105.4	3086.5	3066.0	3047.1	3026.6	3082.3	3028.6	60.0	Bullish
PETRONET	305.2	311.8	308.5	305.6	302.3	299.4	303.1	300.3	66.7	Bullish
PNB	112.0	113.6	112.8	112.1	111.3	110.6	111.9	108.0	48.0	Bullish
POLICYBZR	1854.2	1896.9	1875.6	1837.5	1816.2	1778.1	1820.7	1859.6	50.0	Bearish

NSE 200 SUPPORT & RESISTANCE

SYMBOL	CLOSE	R2	R1	PIVOT	S1	S2	5 DMA	20 DMA	% Delivery	Trend
POLYCAB	6748.5	6846.8	6797.7	6711.3	6662.2	6575.8	6748.3	6359.6	56.0	Bullish
PFC	419.8	427.2	423.5	417.3	413.6	407.4	415.7	413.3	50.3	Bullish
PREMIERENE	1056.6	1075.5	1066.1	1052.5	1043.1	1029.5	1053.3	1033.0	30.8	Bullish
PERSISTENT	5784.0	6038.0	5911.0	5823.0	5696.0	5608.0	5897.1	5989.5	34.5	Bearish
POWERGRID	297.8	301.8	299.8	296.4	294.4	291.1	295.2	292.4	62.8	Bullish
RECLTD	395.1	400.8	398.0	394.1	391.3	387.4	393.8	398.6	39.3	Bearish
RELIANCE	1537.6	1552.3	1544.9	1537.6	1530.2	1522.9	1528.6	1478.7	50.5	Bullish
RVNL	386.5	396.0	391.2	387.7	383.0	379.5	390.1	397.8	30.5	Bearish
SAIL	135.1	136.9	136.0	134.4	133.5	132.0	135.4	131.1	41.8	Bullish
SBICARD	918.8	932.5	925.6	914.1	907.3	895.8	912.4	959.0	51.0	Bearish
SBILIFE	1816.9	1832.5	1824.7	1811.0	1803.2	1789.5	1818.4	1816.2	64.9	Bullish
SBIN	812.7	818.7	815.7	810.5	807.5	802.3	810.3	802.6	53.3	Bullish
SHRIRAMFIN	669.0	681.3	675.1	671.2	665.0	661.1	673.7	676.6	66.3	Bearish
SUPREMEIND	4196.1	4326.8	4261.4	4219.0	4153.6	4111.2	4259.8	4392.9	71.5	Bearish
SIEMENS	3296.8	3388.6	3342.7	3309.0	3263.1	3229.4	3293.4	3255.5	26.5	Bullish
SJVN	99.2	101.9	100.5	99.2	97.8	96.4	98.7	98.8	20.8	Bearish
SOLARINDS	16511.0	17127.0	16819.0	16529.0	16221.0	15931.0	16769.0	16988.6	58.3	Bearish
SONACOMS	461.3	475.8	468.6	464.3	457.0	452.7	472.5	483.8	49.8	Bearish
SHREECEM	31300.0	31596.7	31448.3	31201.7	31053.3	30806.7	31356.0	30116.0	59.4	Bullish
SRF	3286.5	3341.8	3314.2	3269.5	3241.9	3197.2	3248.8	3138.2	58.9	Bullish
SUZLON	66.3	67.2	66.7	66.0	65.5	64.8	65.5	65.2	42.2	Bullish
SUNPHARMA	1672.5	1700.8	1686.6	1667.9	1653.7	1635.0	1677.2	1672.1	60.3	Bullish
SWIGGY	381.5	387.1	384.3	380.2	377.4	373.4	381.8	380.4	50.6	Bullish
TATASTEEL	162.0	163.5	162.7	162.2	161.4	160.9	163.8	157.4	54.7	Bullish
TATACONSUM	1099.9	1115.8	1107.8	1100.7	1092.7	1085.6	1095.3	1098.1	57.9	Bearish
TATATECH	700.0	710.9	705.5	701.9	696.5	692.9	704.9	719.9	57.0	Bearish
TATACOMM	1763.5	1781.8	1772.7	1758.9	1749.8	1736.0	1775.9	1707.6	59.3	Bullish
TCS	3406.2	3439.8	3423.0	3408.2	3391.4	3376.6	3412.4	3437.0	63.3	Bearish
TECHM	1635.4	1657.5	1646.5	1632.7	1621.7	1607.9	1652.7	1674.7	66.3	Bearish
TATAELXSI	6171.5	6256.5	6214.0	6153.0	6110.5	6049.5	6191.1	6310.7	45.8	Bearish
TIINDIA	2925.1	3009.6	2967.3	2923.7	2881.4	2837.8	2960.3	2958.7	53.1	Bearish
TORNTPOWER	1424.1	1468.0	1446.0	1433.1	1411.1	1398.2	1443.3	1431.1	55.4	Bearish
TATAPOWER	400.9	410.7	405.8	401.7	396.8	392.8	401.9	400.3	40.0	Bullish
TRENT	5440.0	5590.0	5515.0	5442.5	5367.5	5295.0	5761.7	5862.7	49.4	Bearish
TORNTPHARM	3322.4	3379.7	3351.0	3323.2	3294.5	3266.7	3345.2	3274.7	80.7	Bullish
TITAN	3441.3	3632.8	3537.1	3486.0	3390.3	3339.2	3636.2	3568.4	46.2	Bearish
TATAMOTORS	693.2	702.0	697.6	692.6	688.2	683.1	690.0	687.7	46.7	Bullish
TVSMOTOR	2830.7	2928.9	2879.8	2839.9	2790.8	2750.9	2877.0	2839.5	63.3	Bearish
UNIONBANK	150.3	155.4	152.8	150.9	148.3	146.3	152.1	148.4	43.7	Bullish
UNITDSPR	1364.7	1396.6	1380.6	1371.0	1355.0	1345.4	1378.1	1435.4	63.5	Bearish
UPL	673.3	690.6	681.9	675.3	666.6	660.0	678.3	651.6	49.2	Bullish
ULTRACEMCO	12445.0	12605.0	12525.0	12415.0	12335.0	12225.0	12426.0	11826.6	64.0	Bullish
VBL	458.2	470.1	464.1	460.6	454.6	451.1	456.4	461.9	53.2	Bearish
VEDL	456.3	461.6	458.9	455.6	452.9	449.6	459.5	456.7	44.3	Bearish
VMM	129.8	132.6	131.2	128.8	127.4	125.0	129.6	129.2	46.3	Bullish
VOLTAS	1371.2	1387.4	1379.3	1364.9	1356.8	1342.4	1360.2	1315.5	50.7	Bullish
WAAREEENER	3068.6	3188.9	3128.7	3022.9	2962.7	2856.9	2984.5	2922.3	28.6	Bullish
WIPRO	269.7	272.1	270.9	269.1	267.9	266.2	268.3	265.1	55.5	Bullish
YESBANK	20.0	20.2	20.1	20.0	19.9	19.8	20.1	20.1	41.6	Bearish
ZYDUSLIFE	983.2	1018.8	1001.0	983.5	965.7	948.2	995.6	977.8	45.5	Bullish

Disclosure & Disclaimer :

HDFC Securities Limited (HSL) is a SEBI Registered Research Analyst having registration no. INH000002475.

This report has been prepared by HDFC Securities Ltd and is solely for information of the recipient only. The report must not be used as a singular basis of any investment decision. The views herein are of a general nature and do not consider the risk appetite or the particular circumstances of an individual investor; readers are requested to take professional advice before investing. "This report may have been refined using AI tools to enhance clarity and readability."

Nothing in this document should be construed as investment advice. Each recipient of this document should make such investigations as they deem necessary to arrive at an independent evaluation of an investment in securities of the companies referred to in this document (including merits and risks) and should consult their own advisors to determine merits and risks of such investment. The information and opinions contained herein have been compiled or arrived at, based upon information obtained in good faith from sources believed to be reliable. Such information has not been independently verified and no guaranty, representation of warranty, express or implied, is made as to its accuracy, completeness or correctness. All such information and opinions are subject to change without notice. Descriptions of any company or companies or their securities mentioned herein are not intended to be complete. HSL is not obliged to update this report for such changes. HSL has the right to make changes and modifications at any time.

This report is not directed to, or intended for display, downloading, printing, reproducing or for distribution to or use by, any person or entity who is a citizen or resident or located in any locality, state, country or other jurisdiction where such distribution, publication, reproduction, availability or use would be contrary to law or regulation or what would subject HSL or its affiliates to any registration or licensing requirement within such jurisdiction.

If this report is inadvertently sent or has reached any person in such country, especially, United States of America, the same should be ignored and brought to the attention of the sender. This document may not be reproduced, distributed or published in whole or in part, directly or indirectly, for any purposes or in any manner.

Foreign currencies denominated securities, wherever mentioned, are subject to exchange rate fluctuations, which could have an adverse effect on their value or price, or the income derived from them. In addition, investors in securities such as ADRs, the values of which are influenced by foreign currencies effectively assume currency risk. It should not be considered to be taken as an offer to

sell or a solicitation to buy any security.

This document is not, and should not, be construed as an offer or solicitation of an offer, to buy or sell any securities or other financial instruments. This report should not be construed as an invitation or solicitation to do business with HSL. HSL may from time to time solicit from, or perform broking, or other services for, any company mentioned in this mail and/or its attachments.

HSL and its affiliated company(ies), their directors and employees may; (a) from time to time, have a long or short position in, and buy or sell the securities of the company(ies) mentioned herein or (b) be engaged in any other transaction involving such securities and earn brokerage or other compensation or act as a market maker in the financial instruments of the company(ies) discussed herein or act as an advisor or lender/borrower to such company(ies) or may have any other potential conflict of interests with respect to any recommendation and other related information and opinions.

HSL, its directors, analysts or employees do not take any responsibility, financial or otherwise, of the losses or the damages sustained due to the investments made or any action taken on basis of this report, including but not restricted to, fluctuation in the prices of shares and bonds, changes in the currency rates, diminution in the NAVs, reduction in the dividend or income, etc.

HSL and other group companies, its directors, associates, employees may have various positions in any of the stocks, securities and financial instruments dealt in the report, or may make sell or purchase or other deals in these securities from time to time or may deal in other securities of the companies / organizations described in this report. As regards the associates of HSL please refer the website.

HSL or its associates might have managed or co-managed public offering of securities for the subject company or might have been mandated by the subject company for any other assignment in the past twelve months.

Please note that HDFC Securities has a proprietary trading desk. This desk maintains an arm's length distance with the Research team and all its activities are segregated from Research activities. The proprietary desk operates independently, potentially leading to investment decisions that may deviate from research views.

HSL or its associates might have received any compensation from the companies mentioned in the report during the period preceding twelve months from the date of this report for services in respect of managing or co-managing public offerings, corporate finance, investment banking or merchant banking, brokerage services or other advisory service in a merger or specific transaction in the normal course of business.

HSL or its analysts did not receive any compensation or other benefits from the companies mentioned in the report or third party in connection with preparation of the research report. Accordingly, neither HSL nor Research Analysts have any material conflict of interest at the time of publication of this report. Compensation of our Research Analysts is not based on any specific merchant banking, investment banking or brokerage service transactions. HSL may have issued other reports that are inconsistent with and reach different conclusion from the information presented in this report.

Research entity has not been engaged in market making activity for the subject company. Research analyst has not served as an officer, director or employee of the subject company. We have not received any compensation/benefits from the subject company or third party in connection with the Research Report.

HDFC securities Limited, I Think Techno Campus, Building - B, "Alpha", Office Floor 8, Near Kanjurmarg Station, Opp. Crompton Greaves, Kanjurmarg (East), Mumbai 400 042 Phone: (022) 3075 3400 Fax: (022) 2496 5066

Compliance Officer: Murli V Karkera Email: complianceofficer@hdfcsec.com Phone: (022) 3045 3600

For grievance redressal contact Customer Care Team Email: customercare@hdfcsec.com Phone: (022) 3901 9400

HDFC Securities Limited, SEBI Reg. No.: NSE, BSE, MSEI, MCX: INZ000186937; AMFI Reg. No. ARN: 13549; PFRDA Reg. No. POP: 11092018; IRDA Corporate Agent License No.: CA0062; SEBI Research Analyst Reg. No.: INH000002475; SEBI Investment Adviser Reg. No.: INA000011538; CIN - U67120MH2000PLC152193

Investment in securities market are subject to market risks. Read all the related documents carefully before investing.

Mutual Funds Investments are subject to market risk. Please read the offer and scheme related documents carefully before investing.

Registration granted by SEBI, membership of BASL (in case of IAs) and certification from NISM in no way guarantee performance of the intermediary or provide any assurance of returns to investors.